

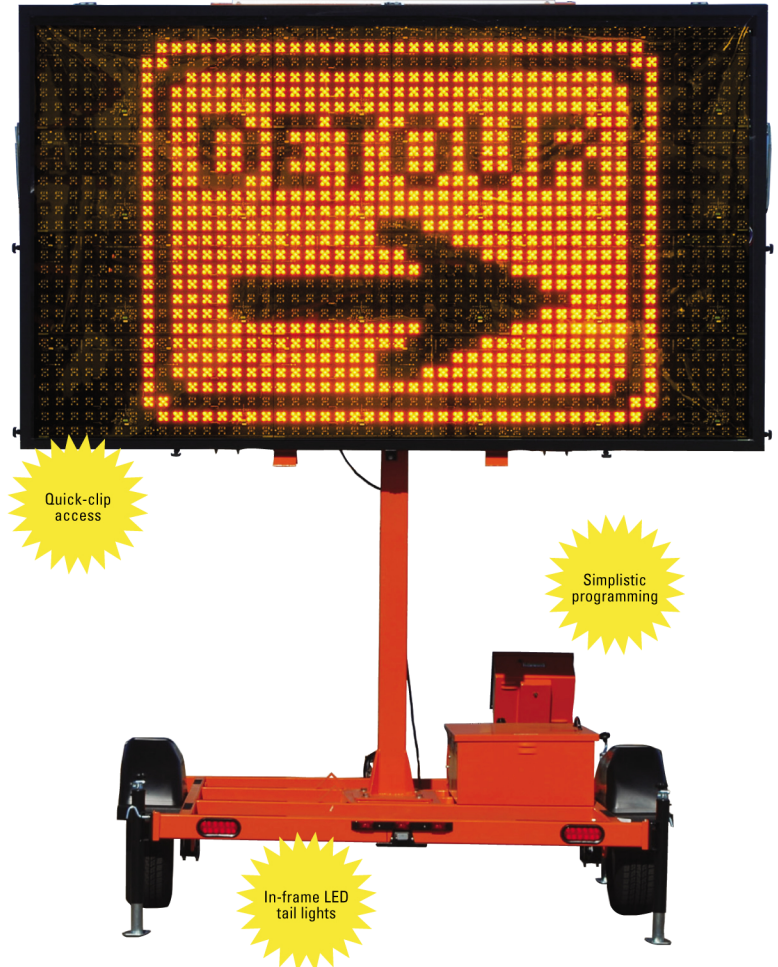
SMC 2000 FM ST

Full-Matrix Solar Message Center

Manufactured to the same quality standards Work Area Protection is recognized for, the SMC 2000 FM ST meets all the requirements of the MUTCD, while offering unparalleled ease of maintenance and programming.

Standard Features

- 5 LEDs per pixel provide uniform light output
- Energy-efficient LED display provides minimal battery maintenance and long operational life
- Automatic intensity control provides optimum LED intensity
- Industrial-grade trailer provides stable platform
- Powder-coat finish for improved fade and scratch resistance
- Calendar programming capability
- Full-Matrix display provides graphic messages and arrow board capability
- Durable in-frame LED tail lights
- On-board charger provides option of solar or AC charging
- Quick-clip access for ease of display maintenance
- State-of-the-art charge technology reduces battery overcharge incidents
- Remote programming option available
- On-board dedicated NTCIP controller provides simplistic programming with secure password protection
- 5-year standard warranty



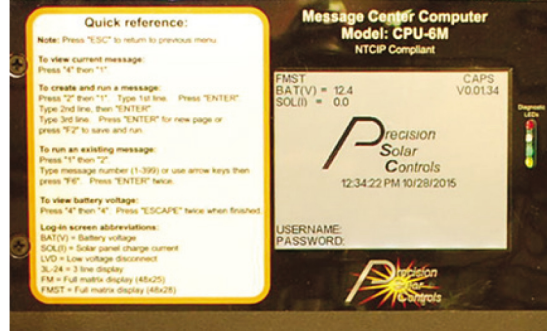
To God be the Glory

Panola Sign & Barricade, Inc.

psbjlawless@gmail.com | psbjlawless@gmail.com

903-407-5691 | 903-578-0440

panolasignandbarricadeinc.com



Full-Matrix Design

The continuous, full-matrix design allows the display of messages using text, graphic symbols or both. Graphic symbols are displayed at a standard 50-inch height and text messages are displayed using either 20" or 28" tall characters.

LED Lamp Pixel Design

The SMC 2000 FM ST uses 5 high-intensity, solid-state LEDs per 2-inch pixel. This creates a more uniform light output in each pixel, resulting in increased message definition and distance legibility.

Standard NTCIP-Compliant Controller

A user-friendly, NTCIP-compliant, dedicated computer designed by Precision Solar Controls reduces the number of keys required to program the SMC 2000 FM ST.

Full-Matrix Display

The SMC 2000 FM ST provides 250 text, 60 graphic and 20 arrow board display messages preprogrammed and stored in the controller. Additionally, 100 user-created messages can be programmed and stored.

Industrial-Grade Structural Steel Trailer

The SMC 2000 FM ST uses a durable trailer system designed to provide years of dependable service. The trailer's high-quality powder-coat finish, 2"x 4" 11-gauge steel frame and a 3,500-pound suspension system enhance the overall quality of the unit.

Modular Electronic Componentry

The entire system was developed with the operator/end user in mind. Electronic components are easily replaced, reducing downtime and maintenance costs. This modularity also improves system diagnostics.

SMC 2000 FM ST Unit Specifications

- Raised Height – 163" (4.14 m)
- Travel Height – 104" (2.64 m)
- Width – 96" (2.43 m)
- Length with tongue – 168" (4.26 m)
- Length w/o tongue – 134" (3.4 m)
- Weight – 1875 lbs (850.5 Kg)
- Energy Source – (6) 6-volt Deep Cycle batteries
- Generator – solar panel array – 140 Watt
- Operating Temperature Range – -20 to +120 degrees F (-29 to +49 degrees C)
- Lift Mechanism – Leak-resistant electro-hydraulic
- Main Frame – 2" x 4" x .120" high-grade steel

Sign Case Specifications

- Height – 79.5" (2.02 m)
- Width – 133" (3.38 m)
- Character Height – 18" (46 cm)
- Lamp – LED (5 per pixel)
- Legibility – 1000 ft (304 m)

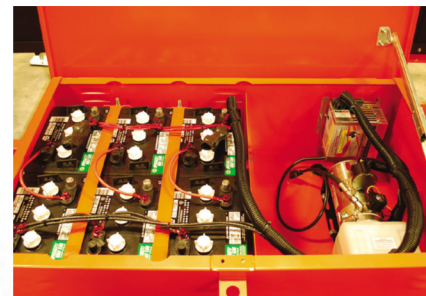
SMC Computer Specifications

- Control Console Display: LCD
- Pre-programmed Messages: 250
- User-programmed Messages: 100
- NTCIP-compliant software
- Update Speed: 100 Milliseconds
- Removable Solid State Design
- Off-the-shelf QWERTY keyboard

Specifications are subject to change without notice.



- The SMC 2000 FM ST shown in travel position



To God be the Glory

Panola Sign & Barricade, Inc.

psbjlawless@gmail.com | psbjlawless@gmail.com

903-407-5691 | 903-578-0440

panolansignandbarricadeinc.com